

# Bolt on Anchor Plate

Model: DH-AP-12/



## Description

The Bolt on Anchor Plate is designed to be permanently bolted to concrete or other structures in locations of frequent work, or where use of a portable base is impractical. It permanently addresses your fall-arrest anchor point requirements.

## Materials

|                              |                    |
|------------------------------|--------------------|
| <b>General Construction:</b> | Welded Steel       |
| <b>Weld Certification:</b>   | AWS-47.1           |
| <b>Material:</b>             | HR Plate and Bar   |
| <b>Finish:</b>               | CS-500 Zinc plated |

## Technical

|                   |                            |
|-------------------|----------------------------|
| <b>Proof Load</b> | 190,000 in-lbs (20.8 kN-m) |
| <b>Weight</b>     | 43lbs (19.5kg)             |

The plate is designed to support the loads required by all portable fall-arrest masts and accessories, when installed and used in accordance with the manufacturers instructions.

## Mounting

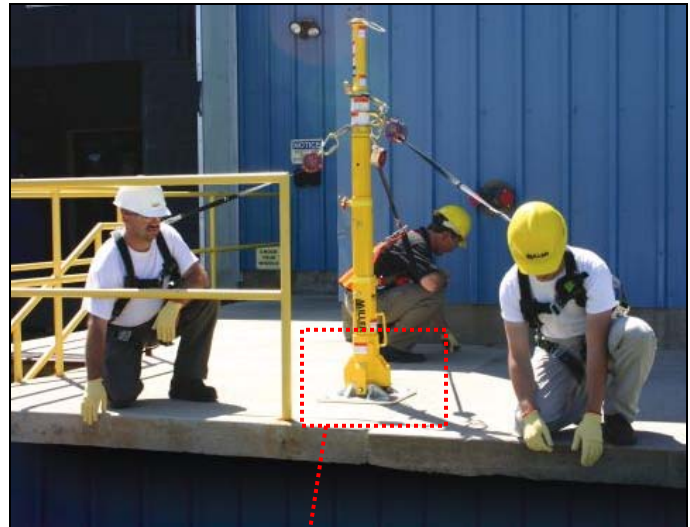
### Requirements

#### DH-AP-12/ Bolt on Anchor Plate:

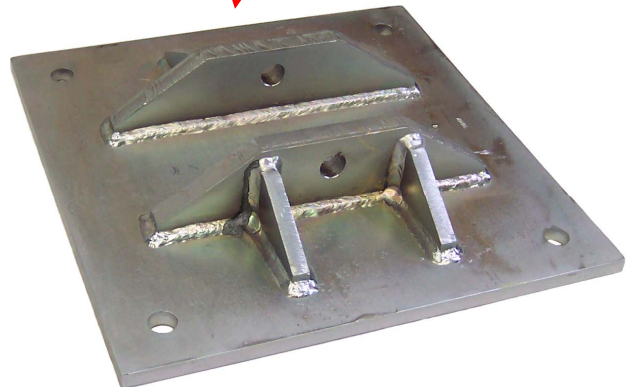
|                                   |                           |
|-----------------------------------|---------------------------|
| <b>Moment Requirement:</b>        | 190,000in-lbs (20.8 kN-m) |
| <b>Vertical Load Requirement:</b> | 3100 lbs (13.8 kN)        |

## Application Restrictions

1. This product is designed for use with portable fall-arrest masts and accessories manufactured or approved by Miller.
2. Ratings, capacities and design factor may vary with system components and configurations. Consult specification sheets for all system components to ensure compliance with requirements.
3. Mounting surface must be within 15° of horizontal and plate must be installed so that the portable fall-arrest mast can be leveled for use.
4. Each installation must be approved to local standards by a qualified engineer.

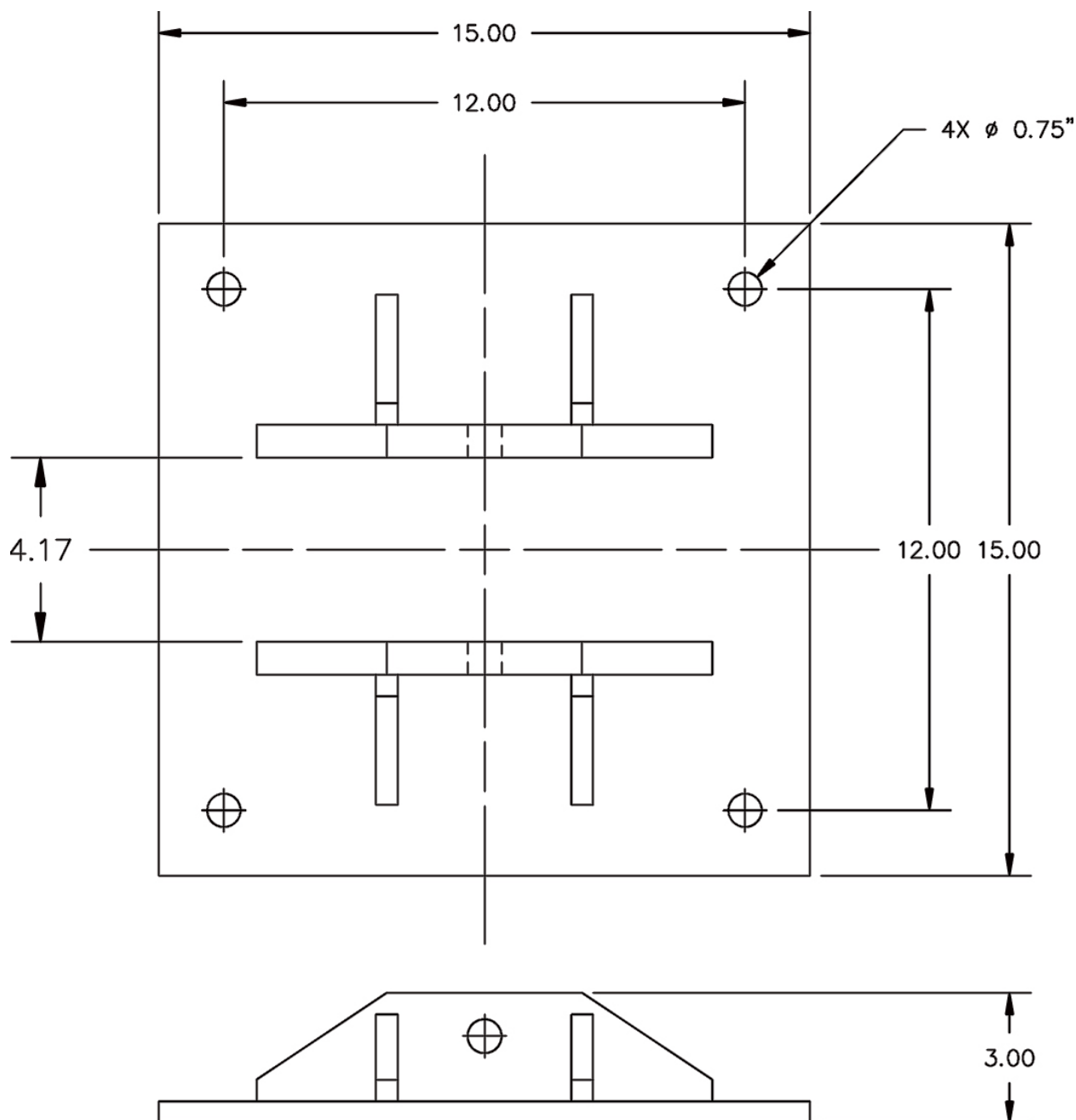


Miller DuraHoist™ Portable Fall Arrest Post & Extension post application using the DH-AP-12/ Bolt on Anchor Plate



# Bolt on Anchor Plate

Model: DH-AP-12/



**MILLER**  
by SPERIAN

Toll Free 800-873-5242 • Phone 814.432.2118 • Fax 814.437.2973 • [www.millerfallprotection.com](http://www.millerfallprotection.com)

**WARNING!** THIS DOCUMENT PROVIDES AN OVERVIEW OF FALL PROTECTION PRODUCTS AVAILABLE FROM MILLER FALL PROTECTION AND CARE HAS BEEN TAKEN TO ASSURE THE ACCURACY OF THE DATA. IT DOES NOT PROVIDE IMPORTANT PRODUCT WARNINGS AND INSTRUCTIONS. MILLER FALL PROTECTION RECOMMENDS ALL USERS OF FALL PROTECTION EQUIPMENT UNDERGO THOROUGH TRAINING, AND THAT ALL WARNINGS AND INSTRUCTIONS PROVIDED WITH THE PRODUCTS BE THOROUGHLY READ AND UNDERSTOOD PRIOR TO EACH USE. FAILURE TO READ AND FOLLOW ALL PRODUCT WARNINGS AND INSTRUCTIONS COULD RESULT IN SERIOUS INJURY OR DEATH.